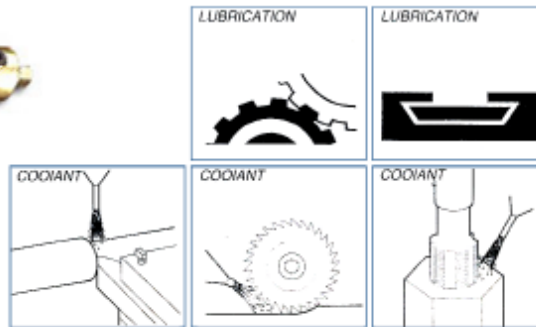


LUBRICANT PUMP

F

Lubricant Pumps	F1
YEM-25L(Recycle System)	F1
SMA-6, LT-8(Resistant-Type)	F2
TM-302CF(Resistant-Type)	F3
MSK-602, SK-224(Grease Oiler)	F4

YEM Electromagnetic Pumps



ORDERING CODE
YEM-25L

FEATURE :

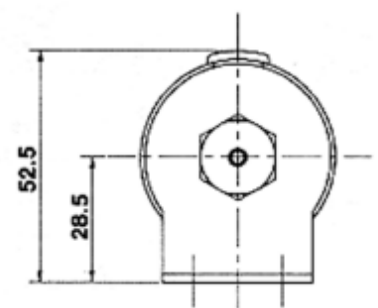
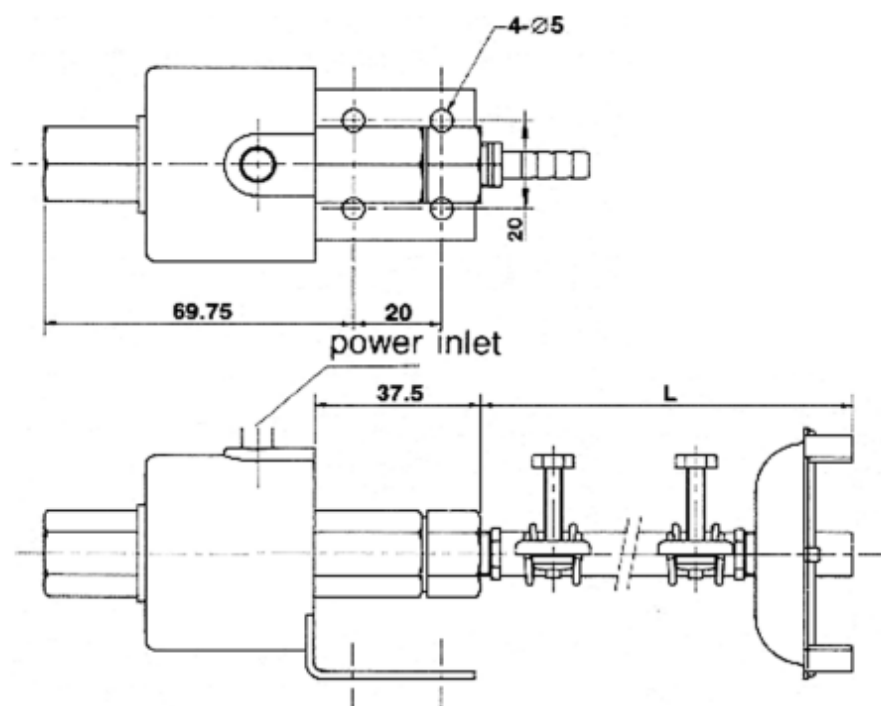
1. Saves the electric power consuming.
2. The volume is small does not occupy the space.
3. The mobility is high, but fast index, regulating control current capacity.
4. May make the intermittence or the long-term usage.

Application

The product can be used as cyclic lubrication system for all kinds of machines such as , lathe milling machine , grinding machine drilling machine and other processing machine.

SPECIFICATION TABLE :

Spec.	Output power	power	Outlet volume	Output Pressure	suction	Pressure setting switch
YEM-25L	25W	110 / 220V	0.4 L / min	1 kg / cm ²	1-1.5 meter	X



SMA Intermittent Electric Pump



ORDERING CODE

SMA-6

FUNCTION AND FEATURES :

The intermittent type electrically operated pump, is impels the piston by the synchronous motor by way of the cam the principle, makes fixed time, the quota transportation gives the oil, the performance solely is remarkable is broadly utilized, belongs the intermittence to put out the accumulation of pressure -like pump. Should each kind of machinery and spits the output with the oil mass demand quiescent interval, has the many kinds of specifications, may coordinate to select, saves the ability, guarantees the mechanical life.

SPECIFICATION TABLE :

Spec.	Outlet C.C.	Voltage	Intermittent off time / min	Float switch	Capacity	Output Pressure
SMA-3	1-3	110/220 V	1.5 , 3 , 5 , 10 , 15 , 30 , 60	no	2 , (4 , 6)	3.5 kg / cm ²
SMA-6	3-6	110/220 V	1.5 , 3 , 5 , 10 , 15 , 30 , 60	no	2 , (4 , 6)	3.5 kg / cm ²
SMA-8.5	4-8.5	110/220 V	1.5 , 3 , 5 , 10 , 15 , 30 , 60	no	2 , (4 , 6)	3.5 kg / cm ²

LT-8 Hand-Cranked Pumps



ORDERING CODE

LT-8

FUNCTION AND FEATURES :

pump LT-8, repeatedly will operate the hand, the lubricating oil will compress after the piston, namely by will leave the oil mouth to put out, lets loose the hand, the nature return home position.

SPECIFICATION TABLE :

Spec.	Outlet	Capacity	Pressure	SizeAxB	Outlet
LT-8	8	650	15	100x110	1/ 8PT

TM-3F/TM-3CF Resistant-Type Lubricant Pump



ORDERING CODE

TM-3 0 1 C F - T 2 P
 P: Plastic transparent bucket
 A: Aluminum bucket
 Tank Capacity 2:2L,3:3L,4:4L,6:6L,8:8L
 With float switch(A,B Contact point)
 With timer controller
 Power voltage 01:110V, 02:220V
 Discharge volume 300c.c./min

FUNCTION AND FEATURES :

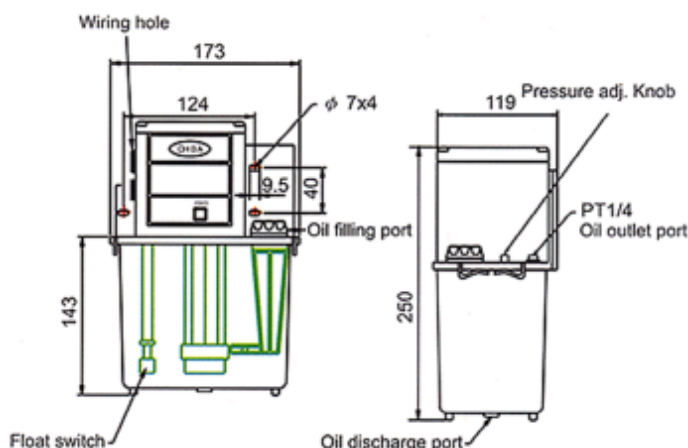
1. May issue the instruction or by the pump computer hypothesis intermittence and the lubrication time by PLC.
2. The pump picks the high-speed operation, the pressure current capacity stable, can be effective transports the oil to each lubricant point.
3. Is equipped with the oil level to examine the knowledge, can at the right moment detect the oil mass and the unusual warning.
4. The pump is equipped with the pressure setting and the installment.

SPECIFICATION TABLE :

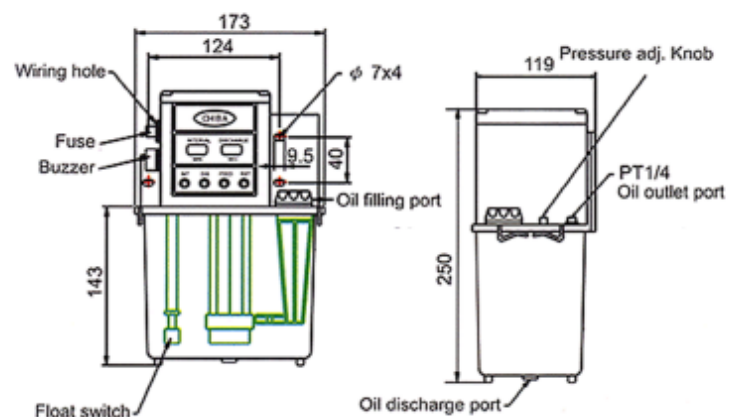
Model	Flow	Voltage	Float switch	Pressure release unit	Pressure applied	Release time	Running time
TM-301F	0.3/0.36 L/min	110 V	○	X	1-15	PLC	PLC
TM-302F		220 V	○	X	1-15		
TM-301CF		110 V	○	X	1-15	1-99 min	1-99 sec
TM-302CF		220 V	○	X	1-15		

2L Outside Specification

TM-3F Without Time Control



TM-3CF With Time Control



MSK Motor-Type Engine Oil/Grease Oiler



ORDERING CODE

MSK-602

FUNCTION AND FEATURES :

1. May or fixed time the TIMER hypothesis and stops the time by PLC for the oil.
2. The high pressure puts out suits the high viscosity fat.
3. Attaches the overload safety valve, may protect the pump and reduce the pipeline damage.

MSK-6 SPECIFICATION TABLE :

Spec.	Flow cc/min	Voltage	Power	Oil Tank Capacity	Max.Output Pressure
MSK-601	60 cc/ min	110 V	40 W	1.5L	100 kg / cm ²
MSK-602		220 V			

SK-224 Manual Type Engine Oil/Grease Oiler



ORDERING CODE

SK-224

OPERATION INSTRUCTIONS :

When move the operation rod , the plunger (iron core) will be moved simultaneously so as to make cylinder become under negativepressure . Then , due to closed air pressure of the plank , the grease will get into the cylinder from the suction port . Now , operate the operating rod to extrude out the grease through pipe in the cylinder by principle of the plunger pushing open the specific pressure of 100kg/cm² , down pressure valve will start to return the grease to the oil tank . The operation rod is to use of a spring to link on the injector as a round storage tank to prevent from oil leaking.

ADVANTAGES :

1. Manual type pump . Use of single pipe , so no need of pipe return device . With simple piping for best effect .
2. Has smooth stickness to the lubricating surface with proper oiling capacity , so no surplus oil will be leaked out to stain with the surface of bench .
3. No need to worry about the dirts & impurities entered into the oiling port , so it is more clean than other ways of lubrication.

SPECIFICATION TABLE :

Spec.	Oil	Outlet	Capacity	Output Pressure	grease distributor	max.
SK-224-T03	Grease oil	2 cc / stork	300 cc	100 kg / cm ²	SD	60
SK-224-T08			800 cc	100 kg / cm ²	SD	60